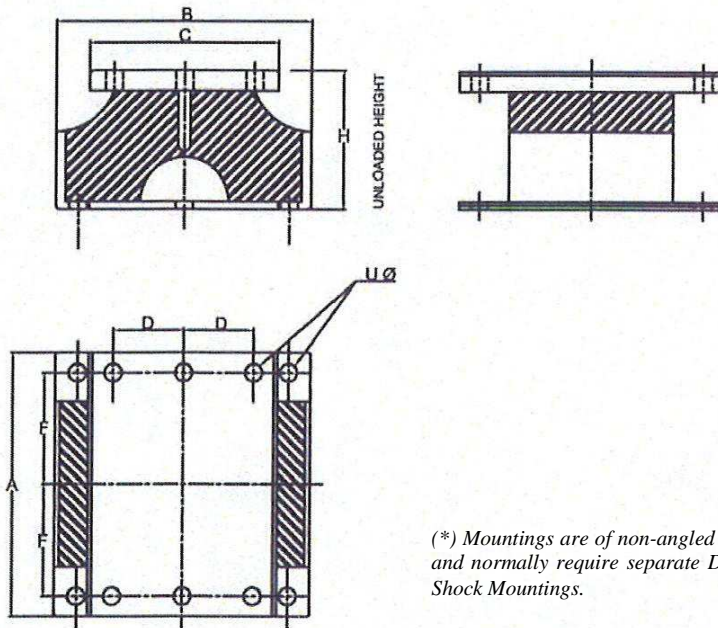


# rubber spring mounts navy shock line "PD"

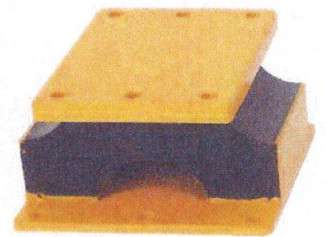
## series RSPD

### definition



(\* Mountings are of non-angled double strip design and normally require separate Decelerating Units / Shock Mountings.

- Natural rubber and steel materials
- Large load-carrying capacity.
- Low natural frequency
- Vibration isolation of medium to high speed engines.
- Good shock attenuation.
- Load range from 180 to 680kg.
- Temperature range :  
-30°C +70°C.



Type	P5D	P7D	P8 1/4D
Nominal static load (kg)	1000	1540	2270
Min/Max static load (kg)	750/1100	1160/1700	1700/2500
Nominal static deflection (mm)	16.0	16.0	16.0
Vertical static stiffness (N/mm)	601	940	1380
Vertical dynamic stiffness (N/mm)	750	1192	1752
Dynamic stiffening coefficient	1.25	1.27	1.27
Natural frequency (Hz)	4.36	4.43	4.21
Arthwartship stiffness (N/mm)	554	906	1326
Arthwartship/Vertical stiffness ratio	0.92	0.96	0.96
Forward Aft stiffness (N/mm)	104	165	242
Forward Aft/Vertical stiffness ratio	0.173	0.176	0.175
Shock deflection (mm)	19	19	14
Shock natural frequency (Hz)	10	10	10
<b>Dimensions</b>			
A (mm)	210	267	330
B (mm)	203	203	203
C (mm)	150	150	150
D (mm)	57	57	57
F (mm)	89	117.5	149
H (mm)	109.5	109.5	109.5
ØU (mm)	14	14	18
<b>NATO Stock Number</b> : 5340-99-	537-5052	537-5054	769-7909
<b>(*) Decelerating Unit</b>			
<b>NATO Stock Number</b> : 5340-99-	537-5053	537-5055	537-5057

Example :  
RSPD-P7D



Prefix :

"Rubber Spring" mount from the series RSPD

Model : P7D

nominal static load : 1540 kg

01/07/2013

Socitec  
BP 33, 78501 Sartrouville cedex - France  
Telephone : +33 (0)1 61 04 60 00  
Fax : +33 (0)1 39 14 03 27  
<http://www.socitec.com>  
e-mail : [shock-intl@socitec.com](mailto:shock-intl@socitec.com)



Document subject to modification without prior notice